

# QUADGUARD<sup>®</sup> ELITE SYSTEM

## LOW-MAINTENANCE DESIGN WITHSTANDS MULTIPLE IMPACTS



### OVERVIEW

The new QuadGuard Elite System offers the added value of reusable cylinders for applications with above average impact frequency. The system meets NCHRP 350, Test Levels 2 and 3 as a redirective, non-gating crash cushion.

The QuadGuard Elite System's cylinders are made of high density polyethylene plastic (HDPE), a material that can withstand multiple impacts before requiring replacement. After a typical design impact, the system is 99% to 100% reusable.

A member of the QuadGuard Family, the QuadGuard Elite System utilizes many of the same components as the familiar QuadGuard System.

### FEATURES AND BENEFITS

- ▶ Durable, reusable HDPE cylinders provide low lifecycle cost.
- ▶ Compact design accommodates impacts by 2000 kg (4500 lb) high center-of-gravity vehicle at speeds up to 110 km/h (70 mph).
- ▶ Quad-Beam™ panels provide 30% higher beam strength than three beam.
- ▶ Even the Flex-Belt nose is reusable after most design impacts.

### MEETS NCHRP 350 CRITERIA AT TL-2 & 3

The QuadGuard Elite System has successfully passed the complete NCHRP 350, Test Level 3 matrix with both the light car and the high center-of-gravity pickup truck at speeds up to 100 km/h (62 mph) at angles up to 20°.

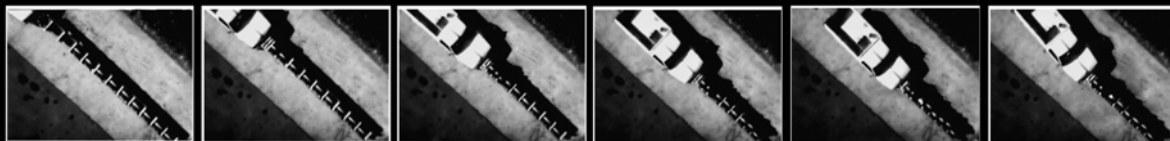
During head-on impacts, the QuadGuard Elite System telescopes rearward and crushes the HDPE cylinders to absorb the energy of impact. When impacted from the side, the QuadGuard Elite System safely redirects or captures the errant vehicle back toward its original travel path without allowing gating.



**ENERGY ABSORPTION**  
SYSTEMS, INC.

[WWW.ENERGYABSORPTION.COM](http://WWW.ENERGYABSORPTION.COM)

### SAVING LIVES BY DESIGN



## QUICK & EASY REFURBISHMENT

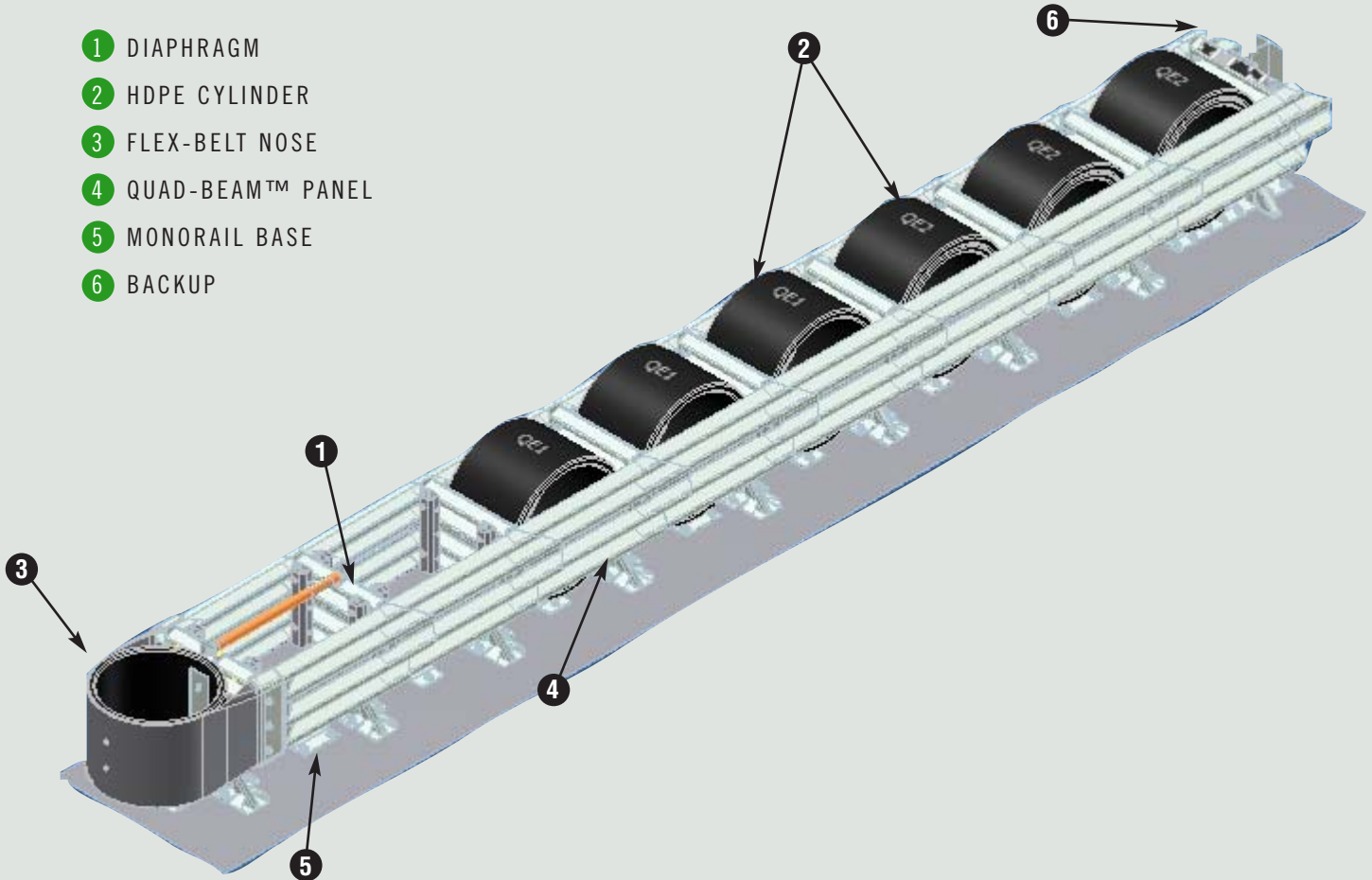


The QuadGuard Elite System, besides being self-restoring after most design impacts, is designed to withstand multiple impacts without the need to replace the HDPE cylinders. After each impact, maintenance crews should measure the shorter diameter of the last cylinder (closest to the backup). When this diameter is reduced from its original 815 mm (32") to 660 mm (26") or less, all of the HDPE cylinders will need to be replaced

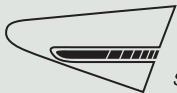
## SPECIFICATIONS

Minimum Width at Backup	610.0 mm	(2')
Maximum Width at Backup	2.4 m	(96")
Length (TL-3 unit)	8.0 m	(26' 6")

- 1 DIAPHRAGM
- 2 HDPE CYLINDER
- 3 FLEX-BELT NOSE
- 4 QUAD-BEAM™ PANEL
- 5 MONORAIL BASE
- 6 BACKUP



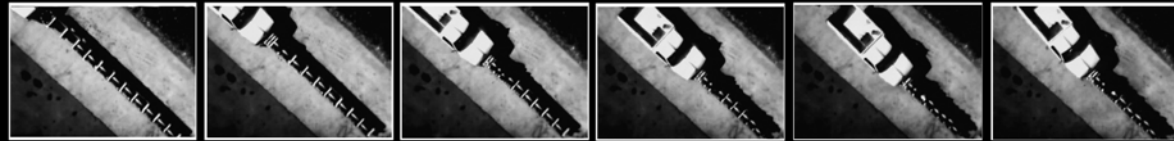
WWW.QUIXTRANS.COM



**ENERGY ABSORPTION  
SYSTEMS, INC.**

35 East Wacker Drive • Chicago, IL 60601  
Tel: (312) 467-6750 • Fax: (312) 467-9625  
www.energyabsorption.com

## SAVING LIVES BY DESIGN



Distributed By:

General specifications for the QuadGuard Elite System are subject to change without notice to reflect improvements and upgrades. Additional information is available in the Product Manual for this system. Contact Energy Absorption Systems for details.